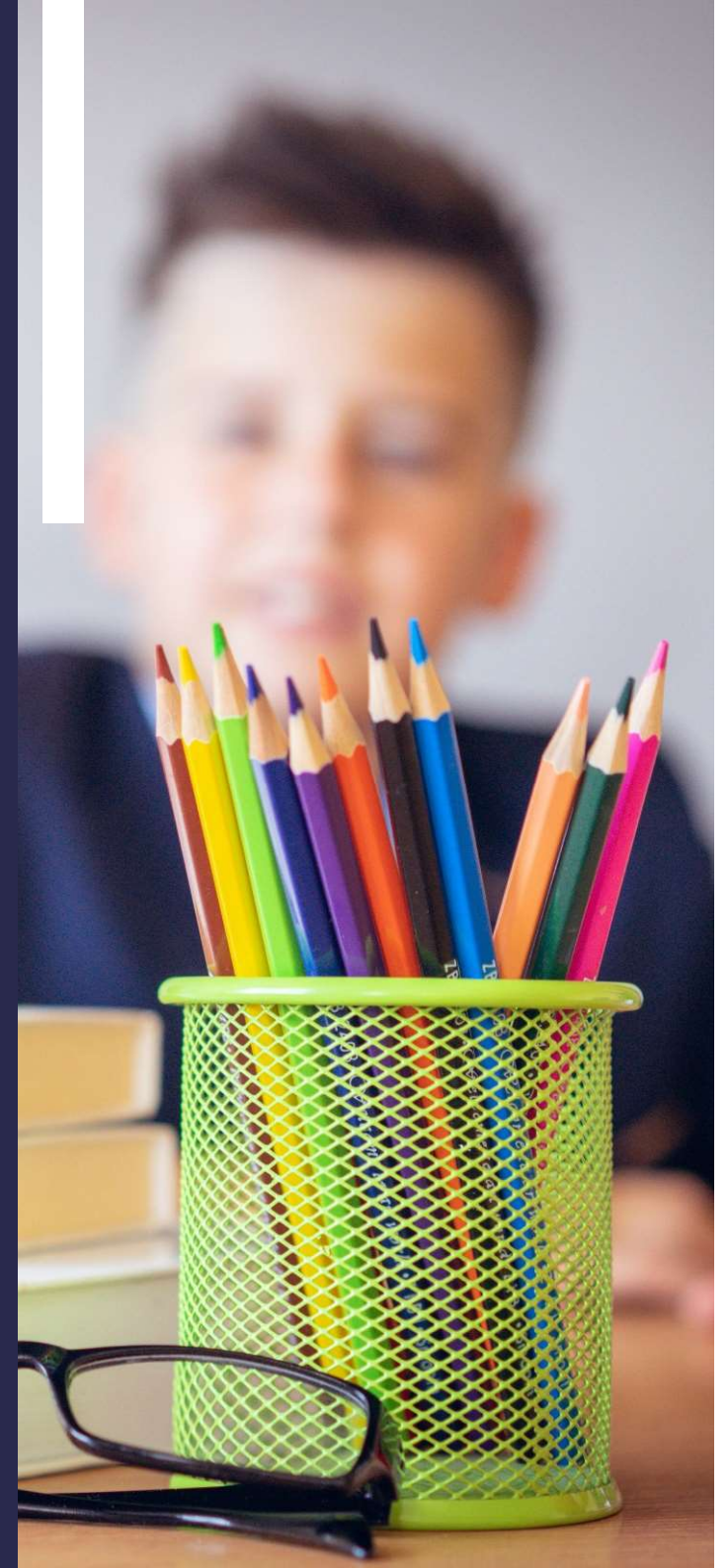


Woodfield
Primary School
**End of Key Stage 2
Assessments 2024**
Parent Information



Agenda

What are end of key stage 2 assessments?

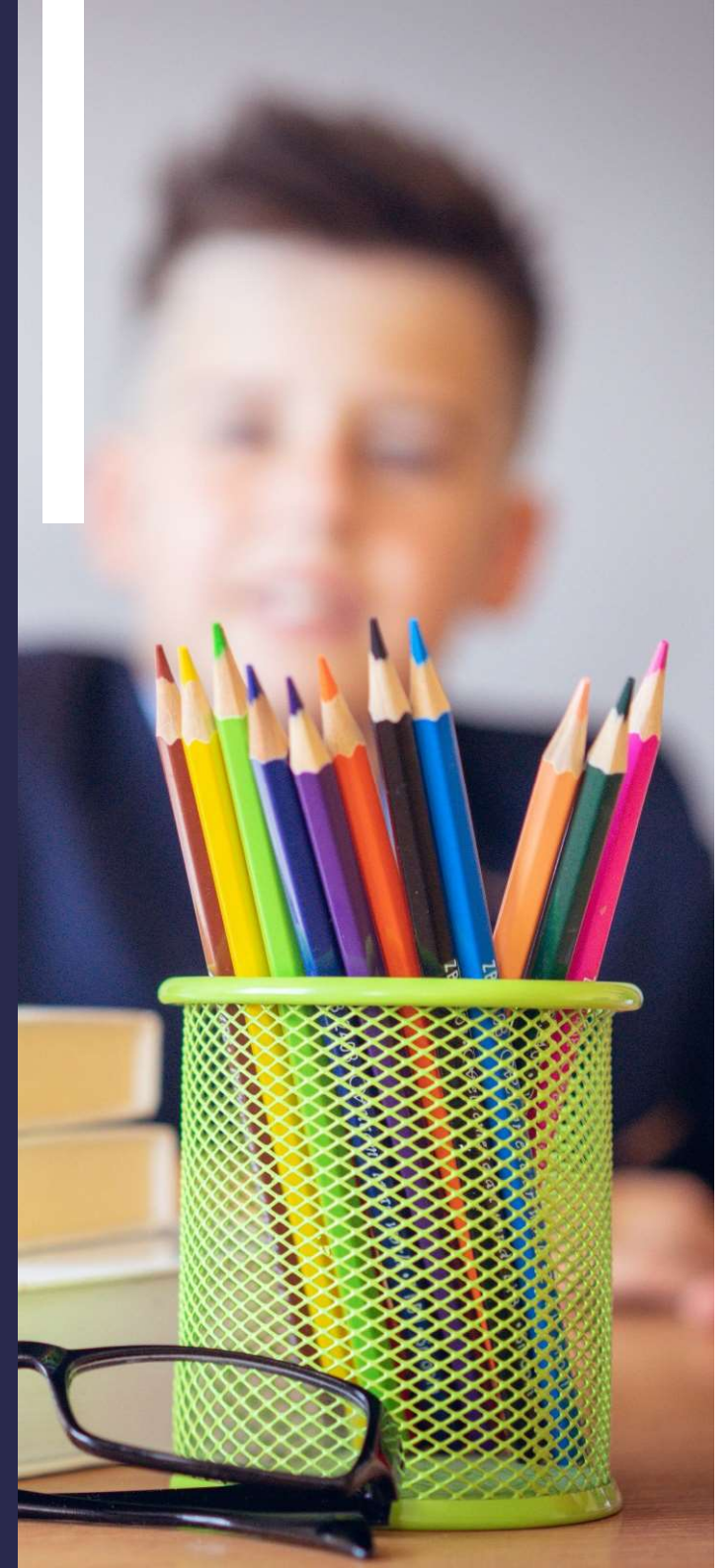
When do they happen?

What are the children tested on?

How are the tests administered?

What happens with the results?

How can you help your child?



What are end of key stage 2 assessments?

What you might know as SATs, or standard attainment tests, are national curriculum tests that are usually taken by children at the end of key stage 2.

- All children are assessed during the last term of year 6; for 2024, this is in the week beginning 13th May.
- The aim of the tests is to establish whether pupils are working at **an expected level** in English and maths for the end of primary school and the start of secondary school.
- **The results of the tests do not tell us how accomplished children are in other areas, such as sport, music or art.**
- Pupils sit six different tests in three subject areas: maths, English reading and English grammar, punctuation and spelling.
- English writing and science judgements are made by the pupils' teachers through teacher assessment, based on evidence of independent writing and work gathered over the course of year 6.

When do they happen?

Every primary school will test their pupils on the same subject at the same time during the week beginning 13th May 2024. The schedule of tests for this year looks like this:

Assessment week 2024

Tests

Monday 13th May

English grammar, punctuation and spelling
Paper 1: questions, paper 2: spelling

Tuesday 14th May

English reading

Wednesday 15th May

Mathematics
Paper 1: arithmetic, paper 2: reasoning

Thursday 16th May

Mathematics
Paper 3: reasoning

What are the children tested on?

English grammar, punctuation and spelling

Paper 1: questions (45 minutes) 50 marks

A combined question and answer booklet which assesses pupils' understanding of the grammar, punctuation and spelling elements of the national curriculum English programmes of study for key stage 2.

Paper 2: spelling (15 minutes but not strictly timed) 20 marks

The paper that pupils receive has 20 sentences, each with a missing word. The teacher reads the sentences one at a time and pupils write in the missing word on their paper.

English reading

(1 hour) 50 marks

Pupils will have a reading booklet with three different texts to read and a corresponding question and answer booklet. The texts are presented in increasing levels of difficulty. Pupils' comprehension skills will be assessed against the comprehension elements of the English programme of study for key stage 2.

What are the children tested on?

Mathematics

Paper 1: arithmetic (30 minutes) 40 marks

Pupils will have a booklet of arithmetic questions based on the national curriculum programmes of study for maths at key stage 2.

Papers 2 and 3: reasoning (40 minutes each) 35 marks each

Both papers will ask children to reason and solve problems, again based on the national curriculum maths programmes of study.

How are the tests administered?

- Breakfast club (8:00am)
- Tests to be in classrooms / in small spaces around the school as we know that our children perform better in their usual classroom environment with their usual teacher / very familiar adults. We will have a trial run with the places and people who will be administering the tests to your children after Easter.
- Tests will be staggered to ensure that children are in small groups
- Children who need breaks between tests will be able to have them
- Children who are entitled to extra time or rest breaks will receive these

What happens with the results?

- For 2024, school results in the end of key stage assessments will be published on the [Key Stage 2 Performance Measures Website](#).
- School results will be shared with our school, the Local Authority, St Bartholomew's Multi Academy trust and Ofsted to support school improvement.
- Scans of marked pupil test papers and test results are published online in July and can be accessed by the school. If we believe there has been anything missed by markers, we will deal with this accordingly and ensure that papers are re-marked where necessary.
- Each child will receive a scaled score for their performance on the tests. This is a score between 80 and 120, where a score of 100 is considered to be working at the expected level of attainment at the end of primary school. There will be one score for Reading, one for GPS and one for maths (which combines the three tests).
- We will share pupils' results in their end of year written report, which is sent home to parents in July.

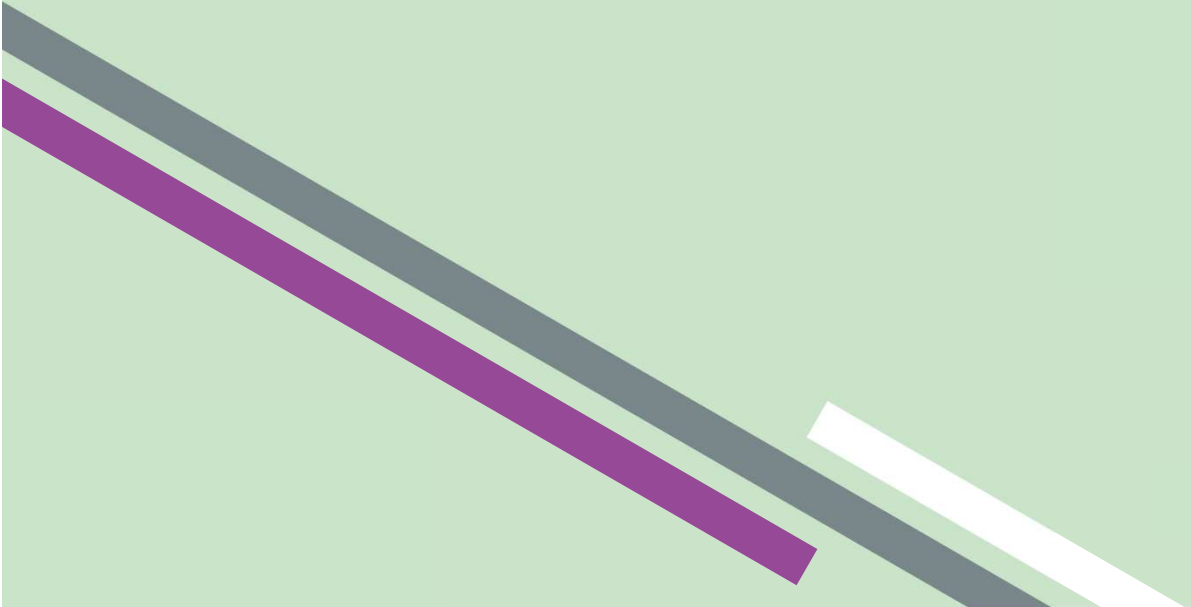
How can I help my child?

Support your child to complete any home learning tasks sent home, such as spelling activities, reading comprehensions and maths sheets / enable your child to attend booster classes if they have been asked to.

Make sure they go to bed at a reasonable time, have a good breakfast (if not eating in school!) and arrive at school **on time** during the assessment week.

Use online activities like Reading plus, TTRS, Power Maths and any further websites which we send over the coming weeks to practise skills at home.

Encourage them to try their best, commend their efforts and plan to celebrate their hard work at the end of the testing week, rather than focusing on the test results. As we said before, tests don't measure many of the things that our children are fantastic at, so we don't want them to believe that this one week defines them!

- **Past papers**
 - **CGP books**
 - **Power Maths books**
 - **Reading Plus**
- 

Any questions?

