

Physical development.

- Set for PE and Forest school planning.
- Get Set for PE – Ball skills unit 2
- Using climbing frame daily and accessing nursery playground once per week for gross motor development. As well as daily access to outdoor provision- Bikes.
- Daily Physical brain break from 9;50 – 10:00.
- Talk about and understand why we need to brush our teeth.
- Successfully brush my teeth for 2 minutes independently.
- Daily name writing practise/ letter formation practice – pencil control.

Expressive Arts and Design.

- Traditional art from different parts of the world.
- Exploration of colour linked to temperature – hot & cold colours.
- Role play (C&L)
- Work with a friend to discuss creative ideas and share thoughts and feelings towards different pieces of art.

Understanding the world.:

Ideas- this will depend on children's interests.

- Exploring stories and pictures- discussing life in other countries – comparisons of England & the Artic.
- Children to bring any family cultural images or artefacts into school.
- Make detailed observation of the world around me through forest school – looking at our senses.
- Incidental – daily – discussion on weather and seasons each morning through daily calendar.
- Explore and talk about the natural world using what I know from stories/ non-fiction
- Draw information from a simple map and use the correct vocabulary such as road, village/town/city
- Can describe different types of animals and plants (both from photos and real life experiences).
- Can talk about the different habitats where animals live and talk about the reasons why.
- Talk about changes from the past to present.
- Discuss stories and link to realistic experiences.
- Messages from around the world, encouraging use of questioning and discussion. What do you think this is?

Personal, Social and Emotional Development.

- Repeated stories and discuss emotions e.g how is the character feeling.
- Children to discuss qualities of friendship, emotions and controlling their emotions.
- Encouraging children to try new activities and keep trying throughout the day - Say what they are good at and what they would like to improve.
- Show resilience and perseverance when they face a challenge.
- Circle time – as needed throughout the week – addressing issues as they occur and taking positive learning from these.



Expressive Arts and Design.- Music

- Music every Monday afternoon.
- Daily singing and nursery rhymes
- Go Noodles and yoga interests

Communication and language.

- Listen to a range of stories within literacy, small groups and within child-initiated play. Adults to support children through daily routines and encourage the following of two-part instructions.
- Children to understand 'why' questions. T & TA to support children with talking partners- looking at their partners, waiting for their partner to talk before beginning.
- Singing and story time on a daily basis.
- Role play – Café, post office, Fruit & Veg shop, theatre.

Literacy.

- **Daily RWI in sets.**
- **Main focus text-** 'The Jolly Postman' Allan Ahlberg' fiction focus and link to Understanding the World topic.
- Non-fiction texts – Postcards, Artic- North Pole.
- Thank you letters to Santa.
- Name the different features of a non-fiction text and how I use them.
- Recapping green and red words throughout the day
- Phonics blast interventions throughout the week for targeted children.
- Name writing/forming most sounds in continuous opportunities.
- Checking work after it has been done – reflecting - Read sentences back to a friend or a teacher. Orally discuss what they have written to a friend or teacher.
- Class will receive a postcard from the elf from the Artic.

Numeracy.

- Power Maths;
- Part, whole model.
- Key skills; counting, number recognition, addition, subtraction.

Vocabulary

Jolly	Giant
Uniform	Cackle
Wicked	Cottage
Postcard	Non - Fiction
Why?	What?
Where?	Arctic
Ice	Frozen

Worldwide Adventure

Exploring ice – melting/cold/freezing

What animals live in the cold?

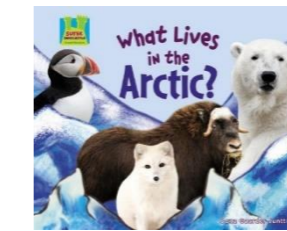
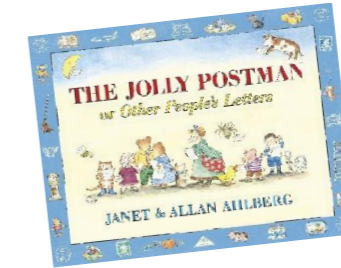
Which countries are cold?



Focus Books

The Jolly Postman – Allan Ahlberg

What lives in the arctic?



Enrichment

We will be exploring Winter. We will be looking at the weather during winter – ice/snow. We will be exploring ice & how it can melt.

We will be looking at different countries that are cold (in particular The Arctic) and the animals that live in these countries.

Parental Engagement

Dojo – Regular updates on how you can support your child each week.

This week our focus 'worldwide adventure'. For this we have turned our role play area into a 'post office' and we have received a letter from the elf – looking at letters that come through the post together.